

ReMedium 50 Body Filler



ReMedium **50** Body Filler contains ZERO impurities.

This is a 100% pure product with hyaluronic acid, which is very easy to use and manufactured with modern technology. Thanks to this patients could achieve the desired results.

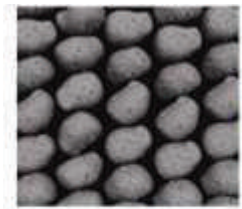
ReMedium **50** Body is a filler with a large capacity of 50 ml, which can be used for the whole body, but specifically for hips, buttocks, breasts, elbows, knees, calves, male and female intimate areas.

ReMedium **50** Body is an optimal body filler made in Korea that provides enlargement of desired body parts, improves skin elasticity and maintains volume for a long time using formation of a three-dimensional contour.

ReMedium **50** Body filler that perfectly structures the body, has high elasticity and strong adhesive force, which allows to achieve excellent results, incomparable with competitive brands.



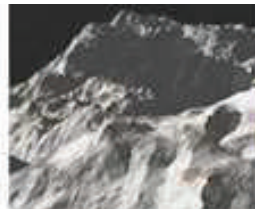
ReMedium 50



Density of other products



Individual particle density in the ReMedium 50 Body filler



The surface of the hyaluronic acid component of other products



The surface of the hyaluronic acid component of the ReMedium 50 Body

Thanks to the Monophasic method and high particle density, our filler creates perfect volume and elasticity in the skin.

Forms a natural shape and has a long-lasting effect.

Gives you a NATURAL effect and is very easy to use.

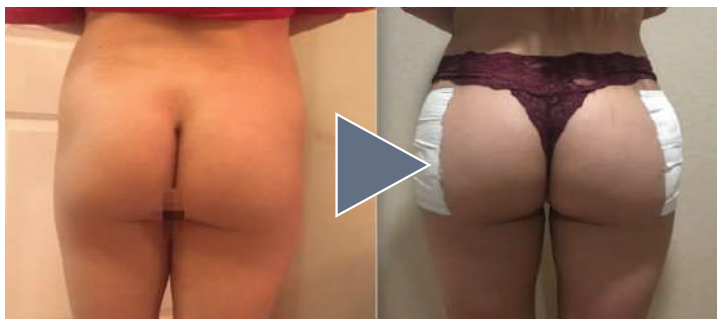
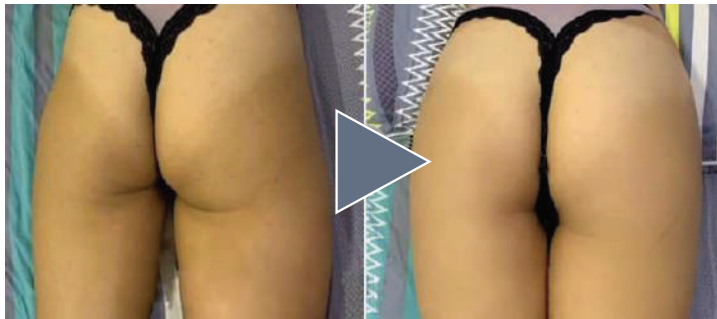
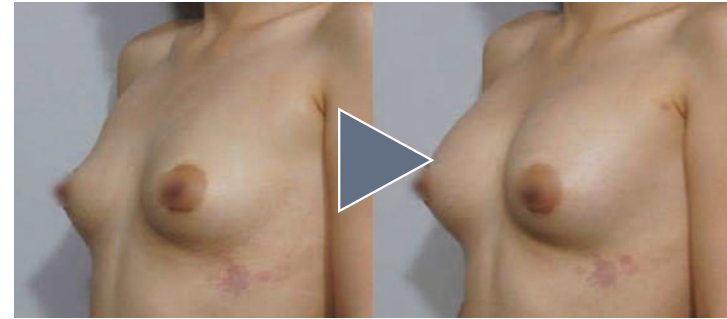
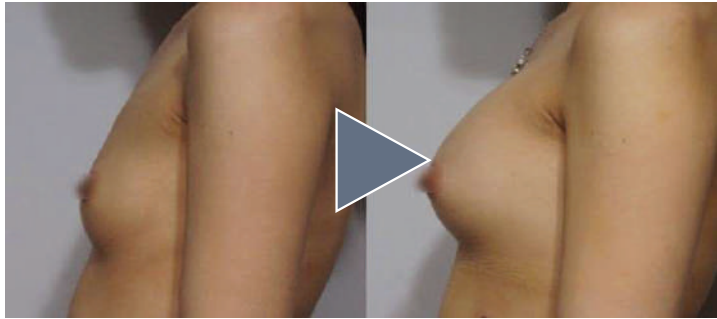
Contains 24 mg/cc Hyaluronic Acid, which is significantly more than other fillers. Safe and contains no impurities.



	ReMedium 50 HA Body Filler	Other body filler	Remarks
Crosslinking rate	10%	10%	
Hyaluronic Acid Concentration	24mg/cc	20mg/cc	Compared to other fillers, ReMedium 50 BODY contains more Hyaluronic Acid, and it also has high cohesion and high adhesion to skin tissues.
Duration of Lasting	18~24 months	6~12months	
Needle gauge for removing filler from vial	18G	21G	The concentration of Hyaluronic Acid in the ReMedium 50 BODY filler is 24mg/cc, which is significantly higher than in other fillers.
Needle gauge for filler injection	16G~18G	21G~23G	And you can determine the excellent viscosity of our filler due to the fact that it cannot be injected with a needle with larger than 18G.



ReMedium 50 Body Before & After



ReMedium 50 Method of drawing filler out of the vial

After removing the aluminum cap and rubber stopper, insert a 10 ml syringe into the vial.



Turn the vial upside down and begin to remove the filler with a syringe.



Usually other fillers are more liquid, so you can extract them with a 21 gauge needle.

But not the **ReMedium 50 Body filler**
since the consistency of our filler is viscous,
which allows it to form three-dimensional contours for you!



Forever 18

INTERNATIONAL

contact@remediumkorea.com

www.remediumkorea.com

